



Arctic Security

Arctic Hub

Early Warning for Cybersecurity

Why do CSIRTs use Arctic Hub?

Prevention is better than cure is a golden rule with your health. But it also applies to the health of your stakeholders' networks. Cybersecurity-related problems already have a severe impact on national economies.

We can mitigate the problem by building cybersecurity early warning systems to prevent cyberattacks by informing organizations about their known issues before they become costly and damaging incidents.

Despite plenty of useful security information available to CSIRTs, there are also many obstacles to using it:

- Typically, CSIRT has limited development resources, and there is constant pressure to maximize the results of the work and available people.
- Building and maintaining a national database of your stakeholder organizations and a system for processing and disseminating cybersecurity notifications is a big ask for any CSIRT team.
- Scaling up early warning platforms to meet the needs of tens or hundreds of thousands of stakeholders is a complex undertaking.
- Most cybersecurity organizations experience significant staff churn, which makes it challenging to maintain in-house developed systems and keep staff sufficiently trained on how to operate them.

Arctic Hub, our cybersecurity early warning platform, addresses these issues with ease of use, simplicity, and affordability. It's a reliable, cost-effective solution for improving cybersecurity on a national scale, and serves as a foundational component in many national cybersecurity notification systems.

Key Benefits of Using Arctic Hub

Automation Focus

Arctic Hub's **automation capabilities free up valuable resources**, allowing teams to focus on strategic tasks. The user-friendly platform empowers entire teams to participate in building early warning capabilities, as it's easy to operate.

Automated delivery of cybersecurity notifications ensures organizations receive critical alerts even under challenging circumstances. Arctic Hub platform becomes crucial when teams face significant national incidents.

Practical Data Processing

Parsing and using external data sources such as Shadowserver or results from in-house scanning services often requires a full-time commitment from CSIRT team members. Arctic Hub simplifies the use of these valuable data sources and makes it straightforward to try and evaluate new information sources.

Arctic Hub also **supports most of the external free, private, and commercial data feeds** typically consumed by national CSIRT teams to improve their visibility and coverage of their constituency's cybersecurity issues. We've done the work required to harmonize all the data sources and make them available in a single automation-ready format.

Arctic Hub provides input APIs to process internally generated data, so that results such as **national-level vulnerability scan results** can be better utilized when you have a customer database to match the results to your stakeholder assets.

Arctic Hub **eliminates labor-intensive work** by automatically delivering tailored notifications related to those findings.

Benefits of providing early warning notifications



An effective notification service reduces issues by helping your stakeholders to identify and respond to both emerging and well-known cyber threats before they become a major issue.



Preparation for major incidents. Those receiving external notifications are better prepared for disruptive events by getting basics like logging and asset management in order.



Constant 24/7 monitoring of your national infrastructure and fast and practical notifications help reduce the average time until problems are mitigated.



Actionable and practical reporting is based on data about the recipient's problems, so that your notifications don't end up in their trash bin.

Benefits for your team



Situational awareness over the problems affecting your stakeholders helps you to focus efforts to the most pressing issues. See the change and track and report on your efforts.



Easy to use system doesn't require seasoned specialists and developers to operate and helps you to focus on providing better cybersecurity services.

Customer Management

Arctic Hub includes a **built-in customer database**. Customer **tagging enables the classification of collected data by sector or industry**, which is challenging to accomplish without an automated system. This helps to offer higher-order insights for the strategic teams, such as the prevalence and impact of vulnerable systems on specific industry sectors.

The customer database is **focused on the externally visible network infrastructure** of the stakeholder organizations. It covers the specific use cases that national CSIRT teams have to deliver cybersecurity early warning services.

Arctic Hub's customer management includes **built-in support for automated asset discovery**, which helps provide better service for subscribers in the typical scenario where they are not fully aware of their assets.

The customer database provides **API-based management**, which helps Arctic Hub to integrate with national, state, or sector-level end-user service portals and enables remote updating for the customer asset configurations.

Data Sharing

Arctic Hub includes **multiple ways to share the threat, vulnerability, and exposure data with your stakeholders**. The platform is API native, which means that, by default, even email notifications use APIs to deliver the content, which ensures reliability and robust delivery.

Each customer can receive standard notifications, without the need to add them manually. Still, it is also possible to fully **customize the notification types, templates and delivery schedules** that are applied to the organization.

Early Warning Performance Metrics

CSIRT teams often struggle to **determine the effectiveness of notification services**, whether they reach the right audience, and whether that audience is making the best use of it. This makes it difficult to know how to improve the service and demonstrate the project's success to key management stakeholders.

Arctic Hub's **tracking of notification deliveries helps teams benchmark performance** and focus support efforts on those stakeholders who need it the most and helps you to report on the success of the services that are offered to the stakeholders.

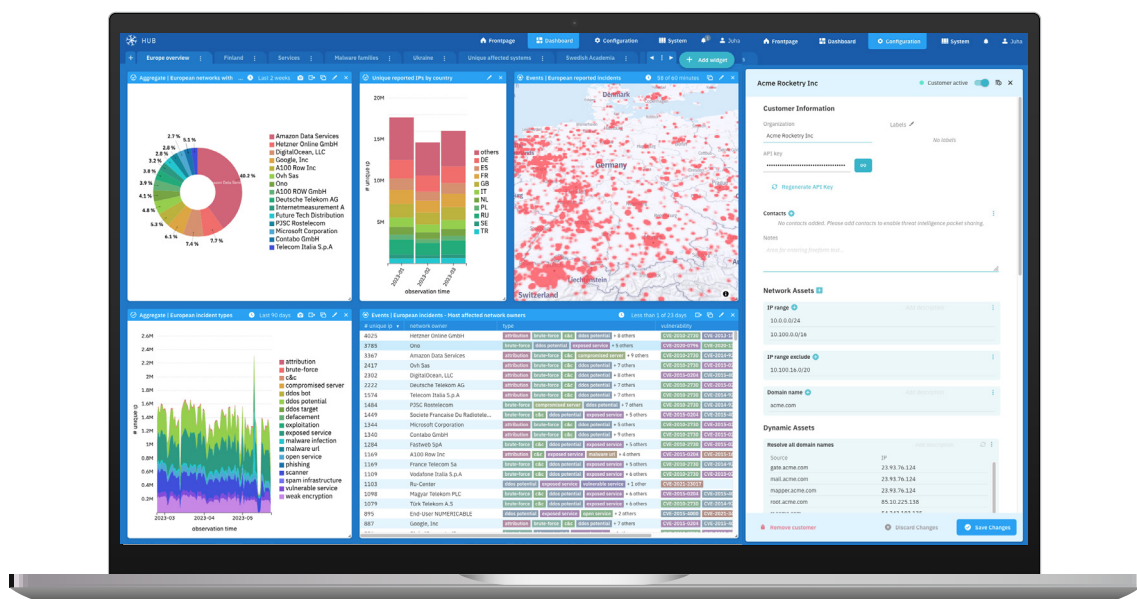
Arctic Hub is Easy to Deploy

Getting Arctic Hub ready to serve your stakeholders is quick, enabling you to offer new early warning services soon after installation. The product is ready out-of-the-box, and no multi-year development projects are needed to get started.

Simply add the relevant organizations to the database, enable one of the standard data feeds, and choose which topic will be your first report.

Our licensing model scales with your deployment size, so you can start small with low risk and increase the project scope as you get experience operating the platform and how it will scale for you.

More than 30 national CSIRT teams already use Arctic Hub to build their cybersecurity early warning services. It's designed to protect critical national infrastructure and automate tedious tasks with notifications. We look forward to helping you deploy yours!



Arctic Hub with dashboard and customer configuration views